



**Greenfield -
beautiful
lawn**

GREEN FIELD

Your products

*Everything you need to know about your
Greenfield products*

New lawns, lawn reseeding, repair mixtures, flower meadow

GREENFIELD

SMALL PACKAGES

New lawns, lawn reseeding, repair mixtures, flower meadow

The new Greenfield series offers all the products you need to successfully establish, care for and restore your lawn. The new seeding category contains eight different lawn mixtures, offering you something for every kind of garden and location. Whether your site is dry or shaded, intensive or unused, Greenfield has the right mixture for you. If you're looking to beautify your existing lawn or repair unsightly patches, five different products are available, ensuring that you always have the right tool for lawn repairs large and small. Just using these mixtures will allow you to make the tattered remains of your lawn into the most beautiful patch of grass on the block. And if you decide that you don't really want a football pitch in your garden, but would rather do something for the bees and butterflies, the Greenfield flower meadow mixture is just the product you need. You will be rewarded with the sight of colourful flowers and happy insects.

Greenfield

- Quality seeds for private users
- A broad product range for all applications
- Use of high-quality varieties
- Coated Seed Vital used in many products
- Package sizes of 275 g to 10 kg





American Green

DARK GREEN QUALITY LAWN

A lawn mixture similar to those commonly used in gardens in dry areas. The high proportion of tall fescue ensures that the mixture has high drought resistance, meaning that less watering is necessary during the summer months compared to conventional lawn mixtures. American Green grows very well in shaded areas. This lawn should, in general, not be cut too short.

- Rapid establishment
- Hardwearing
- Fine texture
- Spreads widely
- Dense and durable turf
- For shady and sun



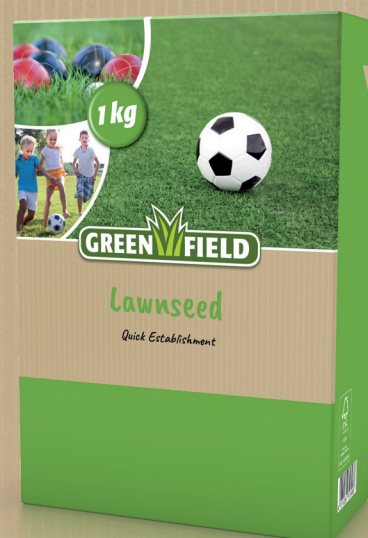
Contents	Type of packaging	Area	GTIN SU	SU	Item no. SU	SU/pallet
1 kg	Folding carton	40 m ²	4011239237910	6	70442	40
5 kg	Bag	200 m ²	4011239613370	1	70445	100

Lawnseed

QUICK ESTABLISHMENT

Greenfield Lawnseed produces a thick, green lawn that is ideal for both heavy-use areas and for decorative purposes. Sunny sites with sufficient water supply are preferred. In addition to its use as a new seeding option, this mixture is also very well suited for use in reseeding damaged lawn areas.

- Spreads widely
- Forms a dense turf
- Healthy and durable
- Rich green colour
- Repairs itself even after heavy usage
- Good regeneration



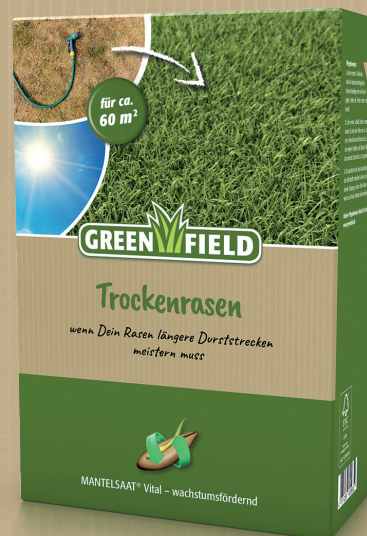
Contents	Type of packaging	Area	GTIN SU	SU	Item no. SU	SU/pallet
1 kg	Folding carton	40 m ²	4011239237903	6	70182	40
5 kg	Bag	200 m ²	4011239613479	1	70185	100
10 kg	Bag	400 m ²	4011239613462	1	70180	65

Trockenrasen (Dry Lawn)

**WHEN YOUR LAWN HAS TO
WITHSTAND LENGTHY DRY PERIODS**

Is your lawn dry and yellowing? Is watering not doing the trick? Then it's time for a lawn that can do more. The deep-rooted Dry Lawn (Trockenrasen) from Greenfield can tolerate plenty of sun exposure and can also withstand lengthy periods of heat. It is also self-regenerating, hard-wearing and needs less water.

- Tolerates heat
- Saves water
- Self-regenerating
- Forms deep roots
- Hard-wearing



Contents	Type of packaging	Area	GTIN SU	SU	Item no. SU	SU/pallet
1 kg	Folding carton	30 m ²	4011239625618	8	62560	40
2 kg	Folding carton	60 m ²	4011239625649	6	62563	40
5 kg	Bag	150 m ²	4011239625670	3	62566	16
10 kg	Bag	300 m ²	4011239625687	1	62569	65

Schattenrasen (Shade Lawn)

**WHEN YOUR LAWN DOESN'T
GET ALL-DAY-LONG SUN**

Does your lawn not receive very much sunlight? Greenfield Shade Lawn (Schattenrasen) shade lawn mix is your partner for semi-shaded and shaded lawn areas. A mixture of high-performance grasses ensures that even shaded areas grow nice and green. The lawn is fine-leaved and grows deep roots, allowing you to save water.

- Shade-tolerant
- Fine leaves
- Forms deep roots
- For difficult locations
- Self-regenerating



Contents	Type of packaging	Area	GTIN SU	SU	Item no. SU	SU/pallet
0.5 kg	Folding carton	25 m ²	4011239625458	8	62544	40
1 kg	Folding carton	50 m ²	4011239625441	6	62541	40

Zier- und Strapazierrasen (Ornamental and Hard-Wearing Lawn)

FOR YOUR NEIGHBOURHOOD'S BEST-KEPT LAWN

Is having a beautiful lawn important to you? Greenfield's Ornamental and Hard-Wearing Lawn (Zier- und Strapazierrasen) is the queen of lawn mixtures. Its attractive appearance with fine, dark green leaves allow it to stand out from the rest, while also remaining resilient. The perfect partner for the lawn of your dreams.

- Fine leaves
- Dark green
- Resilient
- Tolerates low cutting
- Self-regenerating



Contents	Type of packaging	Area	GTIN SU	SU	Item no. SU	SU/pallet
1 kg	Folding carton	50 m ²	4011239625434	8	62542	40
2 kg	Folding carton	100 m ²	4011239625496	6	62547	40

Sport- und Spielrasen (Sports and Playground Lawn)

MAKE YOUR GARDEN INTO AN ARENA FOR SPORTS AND GAMES

Is your garden the place where things really come to life? Foot-races, frolicking, football matches? Then your grass will need to tolerate the wear and tear. Greenfield Sports and Playground Lawn (Sport- und Spielrasen) is the right one for the job. It can also fill in any bare patches on its own and requires little maintenance.

- Hard-wearing
- Self-regenerating
- Less clippings
- Easy to maintain
- Fine leaves



Contents	Type of packaging	Area	GTIN SU	SU	Item no. SU	SU/pallet
1 kg	Folding carton	50 m ²	4011239625113	6	62510	40
2 kg	Folding carton	100 m ²	4011239625144	5	62512	24
5 kg	Bag	250 m ²	4011239625175	3	62515	65
10 kg	Bag	500 m ²	4011239625205	1	62519	65

Strapazierrasen (Hard-Wearing Lawn)

THE GRASS YOU NEED
WHEN THERE'S EXTREME WEAR AND TEAR

Are you looking for the last word in resilient lawns? Greenfield Hard-Wearing Lawn (Strapazierrasen) is just what you need. Its strength becomes clear when subjected to heavy stress: nothing is too much for it. Suitable for use anywhere, thrives on all locations. A real solid pal, who's with you through thick and thin.

- Extremely resilient
- Thick sward
- For all locations



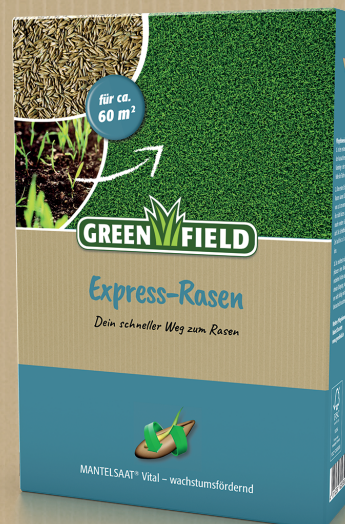
Contents	Type of packaging	Area	GTIN SU	SU	Item no. SU	SU/pallet
5 kg	Bag	200 m ²	4011239625236	1	62525	100
10 kg	Bag	400 m ²	4011239625335	1	62530	65

Express-Rasen (Express Lawn)

YOUR SHORTCUT
TO A GREAT LAWN

In a rush? You need a great-looking lawn, and you need it yesterday? Greenfield's Express Lawn (Express-Rasen) mix mix can't do magic (yet), but it can hit the ground running and just keep going. This mixture is made from select fast-germinating grass varieties that turn your garden green in a flash. Ready, set...

- Fast germinating
- Displaces weeds
- Fast results
- Easy to use
- Self-regenerating
- Robust



Contents	Type of packaging	Area	GTIN SU	SU	Item no. SU	SU/pallet
1 kg	Folding carton	60 m ²	4011239625366	8	62535	40

Klee-Rasen (Clover Lawn)

LET YOUR LAWN
BE ITS OWN FERTILISER

Did you know clover and grass make a darn good team? Clover can take nitrogen from the air and make it available in the soil, forming a natural fertiliser. And just to make sure that your lawn looks as good as possible, we've looked for a clover with extra-fine leaves that will give your lawn a deep green colour all year round.

- Fine-leaved clover
- Self-fertilising
- Suppresses weeds
- Dark green
- Winter hardy



Contents	Type of packaging	Area	GTIN SU	SU	Item no. SU	SU/pallet
1 kg	Folding carton	50 m ²	4011239626431	6	62642	40

Komplettsaat-Neuansaat (Complete New Seeding)

EVERYTHING YOU NEED FOR A NEW LAWN:
SEED + LAWN ACTIVATOR + STARTER FERTILISER

Are you looking to plant a new lawn? The Complete New Seeding (Komplettsaat-Neuansaat) from Greenfield offers you everything you need in a single product. Its high-quality seed has been perfectly balanced and comes pre-mixed with starter fertiliser and a lawn activator. You can save yourself the extra work and apply everything in a single step.

- 3in1
- Ready to use
- Single application
- Contains starter fertiliser
- Contains lawn activator



Contents	Type of packaging	Area	GTIN SU	SU	Item no. SU	SU/pallet
10 kg	Bag	50 m ²	4011239625786	1	62579	65

Nachsaat-Mantelsaat® (Reseeding with Coated Seed)

**OUR RESEEDING MIX MAKES YOUR
OLD GRASS INTO A NEW LAWN**

Is your lawn looking a bit tired? Do you want to close gaps in the grass? Reseeding with Coated Seed (Nachsaat-Mantelsaat®) is suitable for use on any lawn, with stellar results in the blink of an eye. Your lawn will shine in its new green. The complete seed mix also has an extra coating.

- Fast results
- Rejuvenates
- Simple application
- For all surfaces
- Self-regenerating



Contents	Type of packaging	Area	GTIN SU	SU	Item no. SU	SU/pallet
0.275 kg	Pouch	15 m ²	4011239625946	21	62590	80
0.5 kg	Folding carton	30 m ²	4011239625984	12	62593	63
1 kg	Folding carton	60 m ²	4011239625977	8	62594	40
2 kg	Folding carton	120 m ²	4011239625885	6	62595	40
5 kg	Bag	300 m ²	4011239625267	3	62596	16
10 kg	Bag	600 m ²	4011239625892	1	62599	65

Vertikutiermix (Dethatching Mix)

**GET YOUR LAWN BACK IN SHAPE AFTER
DETHATCHING**

Dethatching... then what? Well, the lawn usually looks a little grim afterwards, in need of a pick-me-up. Not to worry, the Greenfield Dethatching Mix (Vertikutiermix) for dethatching provides a quick, gap-free result. This 4-in-1 product gives you the perfect mixture for your dethatched sward and puts you on the path to your dream lawn.

- Closes gaps in dethatched lawns
- Rapid regeneration
- For all surfaces
- Self-regenerating
- Contains lawn activator



Contents	Type of packaging	Area	GTIN SU	SU	Item no. SU	SU/pallet
2.5 kg	Pouch	120 m ²	4011239626219	6	62620	40

Rasenregeneration (Lawn Regeneration)

OUR RESEEDING MIX WITH AN EXTRA FERTILISER BOOST FOR AUTUMN AND SPRING

Is your lawn looking a bit tired? In spring and autumn, lawns can really use a bit of replenishing and some extra care. Our Lawn Regeneration (Rasenregeneration) mixture offers both in a single product: reseeding with Cool Season Active (CSA) grasses, a lawn activator and calcified seaweed. What's more, you can use it on all lawn surfaces with no issues.

- Fast results
- For all surfaces
- Self-regenerating
- Contains fertiliser
- Contains lawn activator



For soil temperatures of 5°C and up

Contents	Type of packaging	Area	GTIN SU	SU	Item no. SU	SU/pallet
2 kg	Folding carton	60 m ²	4011239626035	6	62602	40
5 kg	Bag	150 m ²	4011239626066	3	62605	16

RasenFix® (Patch Repair)

FOR THE BARE PATCHES IN YOUR GARDEN

Are there gaps in your lawn? Do you want them gone quickly? Patch Repair (RasenFix®) offers a convenient solution for you: four components in a single product. Seeds with fertiliser to provide nutrients, calcified seaweed to neutralise soil pH, and coir granules as a substrate. You'll get good results in no time, because you've thought of everything. Nice and simple.

- Covers bare patches
- Fast germinating
- Easy to use
- Contains fertiliser
- Contains coir granules



Contents	Type of packaging	Area	GTIN SU	SU	Item no. SU	SU/pallet
1.5 kg	Pouch	10 m ²	4011239626110	6	62610	40

Blumenwiese (Flower Meadow)

FOR A MEADOW THAT BLOOMS IN VIBRANT COLOUR

Would you rather your garden be more of a flower patch than a lawn? Greenfield Flower Meadow (Blumenwiese) mix offers you a species-rich mixture of flowers, herbs and grasses. Not only does it look beautiful, it's also good for the environment: the lush, nourishing vegetation is a delight for insects like butterflies and bees.

- Vibrant colours
- Nectar-rich
- Long-lasting blooms
- Perennial
- Insect-friendly

15% flower and herb mixture with over 40 species

85% grass mixture



Contents	Type of packaging	Area	GTIN SU	SU	Item no. SU	SU/pallet
1 kg	Folding carton	100 m ²	4011239625816	6	62580	40



Your sowing calendar

Flower meadow calendar

Recommendation	Feb	March	April	May	June	July	Aug	Sept	Oct
Sowing									

Lawn calendar

Recommendation	Feb	March	April	May	June	July	Aug	Sept	Oct
Seeding+Reseeding									
Dethatch									
Fertiliser									

For best results, plant seeds when the ground temperature is at least 10°C.

Instructions for new sowing



1. Ensure that the seedbed is even, finely-textured and trample resistant.



2. Spread the seeds over the surface as evenly as possible by hand. We recommend that you make two passes (once down, once across). You can find the correct seed rate on the product packaging.



3. Lightly rake the seeds into the soil (no deeper than 5 mm) and lightly roll the surface.



4. Water the surface immediately after planting, when possible with a very fine lawn sprinkler.



5. Keep the surface moist for at least 4 weeks and protect it from drying out.

Instructions for Reseeding + Repair mixtures



1. Mow the lawn as short as possible.



2. Remove any unevenness in the ground with a mixture of 70% sand and 30% soil.



3. If the soil is dry, apply the reseedling or repair mixture evenly to the area by hand.

You can find the correct sowing rate on the product packaging.

Tip: Sprinkle the surface several times with smaller amounts to ensure an even result!



4. Water the area extensively immediately after sowing and keep it moist for approx. 14 days.



5. You can mow for the first time after approx. 14 days. The first cut should not be too deep (about 8 cm).

Coated Seed Vital growth-promoting

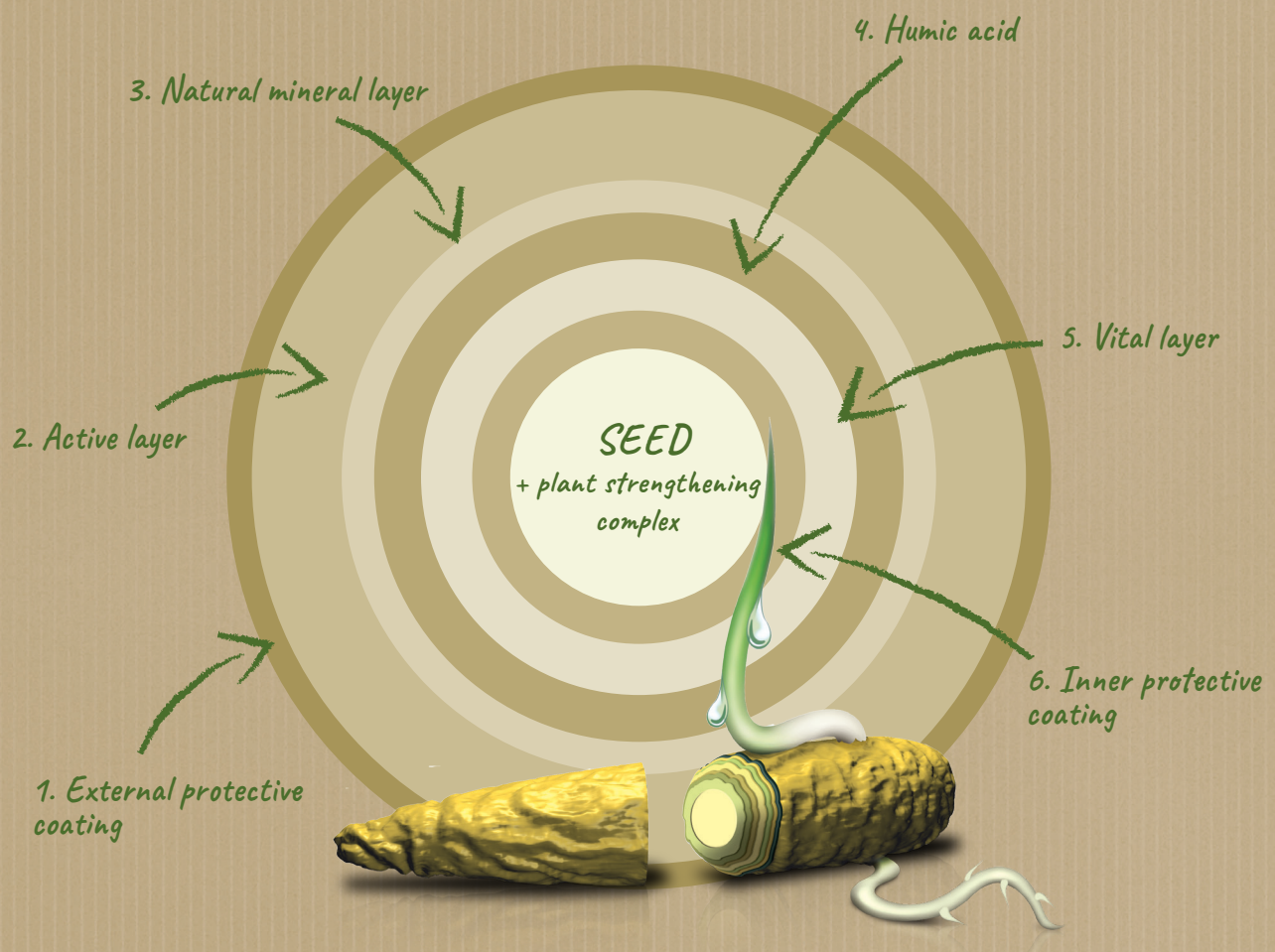


What is that? Your seed is additionally coated and thus protected from external influences. The coating can also absorb and store water well. The microorganisms contained are released in the soil and ensure optimal soil-plant-symbiosis.

For what? Your seed is protected right from the start, optimally cared for and germination is accelerated. This is how your lawn grows more quickly. In addition, the grass is more resilient because it is strengthened by the additional nutrients.

Additional advantages:

- ▶ More plants per m²
- ▶ Stronger seedlings
- ▶ Higher emergence rates due to better soil contact
- ▶ Preservation and protection of the seed
- ▶ Simple and even sowing
- ▶ Your seed will not be blown away
- ▶ No feeding damage by birds and rodents



GOOD TO KNOW!

“



LAWN DISEASES

Symptoms, causes,
and what can be done.

”

SNOW MOULD (FUSARIUM PATCH)

Microdochium nivale (syn.: *Fusarium nivale*)

Importance: The most widespread lawn disease, causes significant damage.

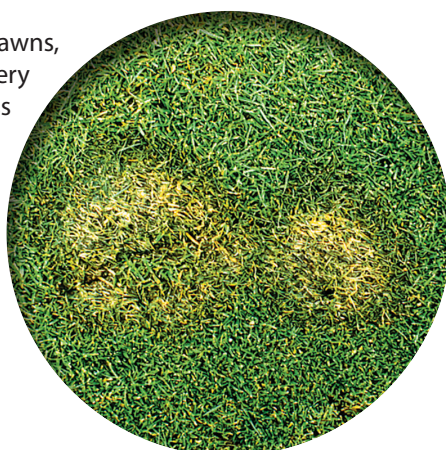
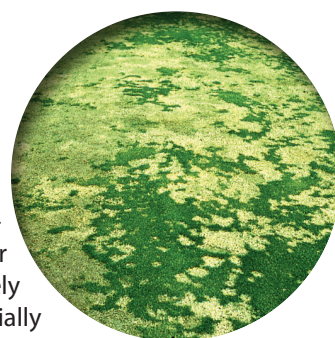
Season: Any season under unfavourable conditions, generally in spring and autumn.

Symptoms: Initial appearance of small, dark-brown or orange circular points, which quickly increase in both size and number. Patches of dead grass appear. Affected grass can become wet and slimy. The patches tend to have a dark-brown ring and a lighter centre. The fungal mycelia (white to pink) is sometimes visible around the patches; the dead leaves often stick together.

Where? On very fine and thick lawns, sometimes ones that receive very intensive maintenance. All grass species are affected, though partially variety-dependent.

Causes: The disease is exacerbated by wet weather and wet surfaces; extremely high nitrogen levels, especially in autumn; topdressing with excessively high doses; and alkaline conditions.

Preventative measures: Measures to reduce long-lasting surface moisture, e.g. drainage; increasing air circulation by not placing trees, hedges, fences and walls too close on the lawn; aerification and sanding; eliminating water-retaining lawn thatch; limiting irrigation; not applying nitrogen or lime in periods that favour disease emergence; always removing clippings.



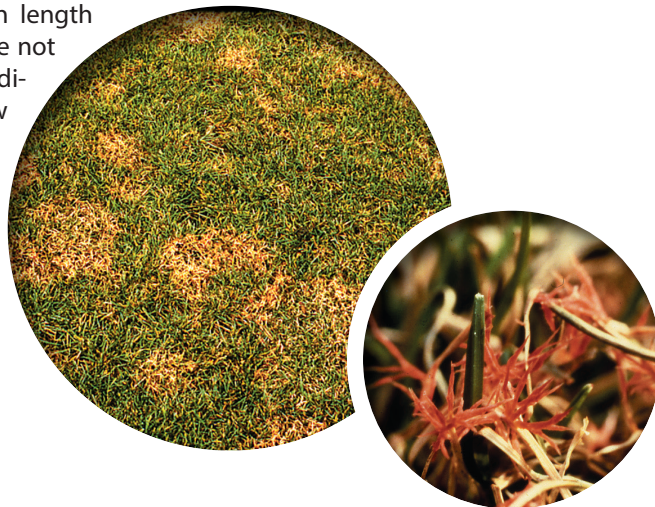
RED THREAD DISEASE

Laetisaria fuciformis
(syn.: *Corticium fuciformis*)

Importance: Extremely widespread; in severe cases the grass can die off entirely. Affected lawns generally recover.

Season: In summer and autumn, up to winter under mild conditions.

Symptoms: Spot-like damage on grass, often with a pink or reddish appearance (caused by needle-like fungal hyphae protruding from diseased leaves, which can grow up to 25 mm in length and are often branched). Spots are not clearly delimited and can vary in diameter from 20-50 mm on the low end up to 350 mm. In mild cases, necrosis only occurs in leaf tips.



Where? All turf grasses can be affected. Most common in *Lolium perenne* and *Festuca rubra*, especially in slow-growing varieties that require significant care.

Causes: Insufficient supply of nutrients, especially nitrogen.

Preventative measures: Nitrogen fertiliser should also be applied in the summer months in order to promote growth. Caution is necessary in the event of excessive nitrogen additions, which can lead to outbreaks of snow mould.

TAKE-ALL

Ophiobolus graminis

Importance: Not a widespread disease, though under unfavourable conditions it can cause significant damage.

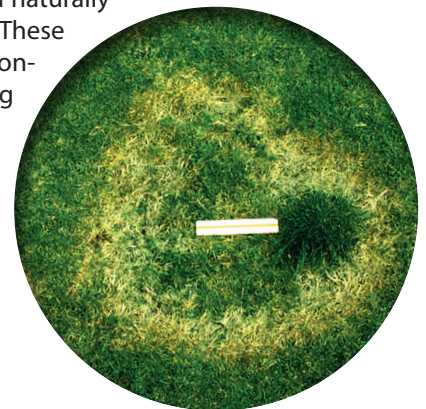
Season: Summer or autumn; affected areas can, however, persist through the entire year.

Symptoms: Rings of yellow or orange-coloured grass emerge with a diameter of 0.1-1.0 m, followed by a ring of about 0.1 m of dead grass. The change in colour is a result of the fungus attacking the roots. Inside the ring, the only species that remain are those not susceptible to the disease and weeds.

Where? Take-all can emerge in any type of turf grass, but is especially prevalent in *Agrostis*-dominated stands.

Causes: Standing water and alkaline soil pH strengthen the infection. The disease emerges when wet, acidic soils are treated with lime, for example on fairways. It can also emerge in new plantings, when the soil was previously disinfected or when foreign material such as sand or lava rocks are applied to the plant layer (in these cases, the lack of antagonistic fungi is probably the cause).

Preventative measures: Once the disease has become established, it is difficult to bring it under control. Preventing it though proper care is much more advantageous. Standing water can be avoided through a well-functioning drainage system. Under an ideal lawn care scenario, no lime needs to be applied. However, if lime is applied in the autumn, it should be followed by a spring application of acidifying fertiliser, such as ammonium sulphate nitrate. The soil reaction can also be improved through the use of alkaline sand for topdressing and irrigation water which often contains a naturally high amount of lime. These factors should be considered when planning lawn care measures.



HELMINTHOSPORIUM LEAF SPOT

Helminthosporium vagans

Importance: Very widespread, but rarely causes notable damage.

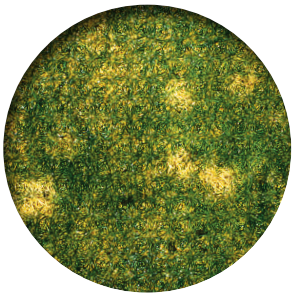
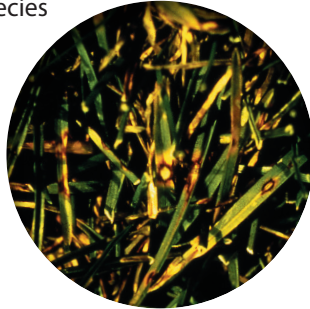
Season: Can occur at any time of the year.

Symptoms: Spots on the leaf with varying colours, though they can be brown, black, olive-green or purple.

Where? Affects almost all grass species and lawn types.

Causes: The spread of leaf spots spread increases under warm and humid conditions. Stressed plants or old tissue is most vulnerable.

Preventative measures: Remove cuttings and old, dead plant matter; avoid creating unnecessary moisture (through overwatering); increase air circulation by removing obstacles (hedges, walls, fences, trees).



DOLLAR SPOT

Sclerotinia homoeocarpa

Importance: Widespread in certain regions, especially on intensively maintained lawn types. Otherwise seldom observed.

Season: Summer and autumn.

Symptoms: Forms small, well-defined circular patches around 50 mm in diameter. Inside the patches, the grass is mostly dead, with a straw colour and dry. In severe infections, individual patches can combine into larger damaged areas. The disease can also co-occur with red thread disease.

Where? All turf grasses can be affected. Most common in *Lolium perenne* and *Festuca rubra*, especially in slow-growing varieties that require significant care.

Causes: The disease is favoured by the presence of susceptible grass species and varieties, and by a lack of nutrients, particularly nitrogen.

Preventative measures: Using resistant varieties of *Festuca rubra trichophylla* and balanced nutrient additions with nitrogen.

BROWN PATCH

Rhizoctonia solani

Importance: Infections are rare, but severe when they occur.

Season: During the entire growing season.

Symptoms: The fungus most commonly affects young grass seedlings following a new planting, thus causing seedlings to die and resulting in uneven emergence.

Where? All turf grasses are affected, especially *Agrostis* and *Festuca* species.

Causes: Seeds are most commonly infected prior to planting. Imbalanced nutrient additions, however, can favour fungal growth, especially when there is an excess of nitrogen and phosphorous with a lack of calcium and magnesium.

Preventative measures: Balanced nutrient provision, seed coating (e.g. use of Coated Seed).



TYPHULA BLIGHT

Typhula incarnata

Importance: Depending on weather patterns, severe damage can occur in some years.

Season: Infection often occurs in autumn or winter in damp and cool weather, though damage generally becomes apparent in early spring.

Symptoms: Circular spots of dead grass with a diameter of up to 40 cm, pale pink to white mycelia visible on leaves. The fungus causes root decay, leading to the death of the grass plant.

Where? In all turf grasses, especially in *Lolium perenne* (certain varieties), less commonly in *Festuca rubra*. More common on sandy soils.

Causes: Surface compaction with excessive moisture, grass allowed to grow too high.

Preventative measures: Limit nitrogen fertilisation in autumn; maintain a mowing height of 3-3.5 cm prior to winter; aerate, sand and dethatch the upper surface.

RUST

Puccinia ssp.

Importance: Minor infections are common, severe ones are very rare.

Season: Summer and autumn.

Symptoms: Orange or brown pustules are formed on the leaf surface, which can be irregularly distributed or arranged in lines.

Where? Almost all grass species can be affected. Among turf grasses, infections are most likely to occur in *Lolium perenne* and *Poa pratensis*.

Causes: Warm weather; most frequently occurs on long, unmown lawns. Regular cutting can prevent infections.

Preventative measures: The risk can be minimised by selecting resistant varieties.

FAIRY RING (TYPE 1)

Marasmius oreades

Importance: Relatively common on fairways and similar areas, where they can cause significant damage. Less frequently observed on golf greens or tees.

Season: Rings can last for several years, but the symptoms are most clearly visible during dry summer weather conditions.

Symptoms: Type 1 fairy rings kill or severely damage the grass. Two rings are visible, in the shape of an arc or circle, and consisting of grass with vigorous growth and dark green colouration. Between these rings is a ring of bare ground with dead grass. The fungi create extremely hydrophobic soil conditions, which lead to the turf drying up. Underneath the ring, there is a thick, white net of mycelia that gives off a typical mouldy smell. Between summer and autumn, small yellow-brown mushrooms can be seen in the outer ring.

Where? All turf grasses.

Causes: The conditions are not yet completely understood, but surface waterlogging may play a role. Fairy rings are found in all soil types, but are most common on light, sandy soils.

Preventative measures: It is hard to fully eliminate fairy rings; often the most that can be done is to prevent further spreading. Rings rarely grow through obstacles that surround the soil, such as lawn edges or borders. Cutting across the infected zones is also frequently effective, as it allows antagonistic fungi to enter the ring area and prevent further expansion. Removal of the affected soil is also highly effective, though very costly. Prior to the use of fungicides, the hydrophobic zone must first be softened through aeration and the administration of a wetting agent.



FAIRY RING (TYPE 2)

Scleroderma ssp.

Importance: Commonly occurs on very fine lawns (ornamental lawns, greens); however, serious damage only rarely occurs.

Season: Symptoms are most commonly visible in summer and autumn, but the fungi are present all year round.

Symptoms: Rings, bands or arcs are visible, around which grass grows more quickly and has a darker green colour. Significant damage does not occur. As a side effect, the fruiting bodies of the fungi are occasionally visible (standing or gill fungi).

Where? Nearly all turf grasses can be affected. Type 2 fairy rings are most commonly observed on golf greens.

Causes: Unknown; the symptoms are clearest under conditions of low nitrogen.

Preventative measures: When grass is not damaged, the symptoms are often tolerated. However, it can become unsightly. Fairy rings can be hidden by administering extra nitrogen during the growing season or by using ferrous sulphate on the surrounding area to give it a darker green appearance.



FAIRY RING (TYPE 3)

Scleroderma ssp.

Importance: Very widespread, generally no damage to the grass.

Season: The fungus is present year-round, but the ring is only visible for a short period, generally in autumn.

Symptoms: Fungal activity is apparent due to the formation of a ring with grass showing vigorous growth and dark green colouration, as well as the irregular emergence of fruiting bodies.

Where? Observed on most types of lawns, though less frequently on hard-wearing lawns.

Causes: Unknown.

Preventative measures: Not necessary, since no real damage is caused. In order to prevent additional spread, the fruiting bodies can be removed before they release their spores.





**Feldsaaten Freudenberg
GmbH & Co. KG**

Management:

Manfred Freudenberg

René Freudenberg

Stefan te Neues

Postal address:

PO Box 111 104

47812 Krefeld

Germany

info@freudenberg.net

www.freudenberg.net