

# Variety Description

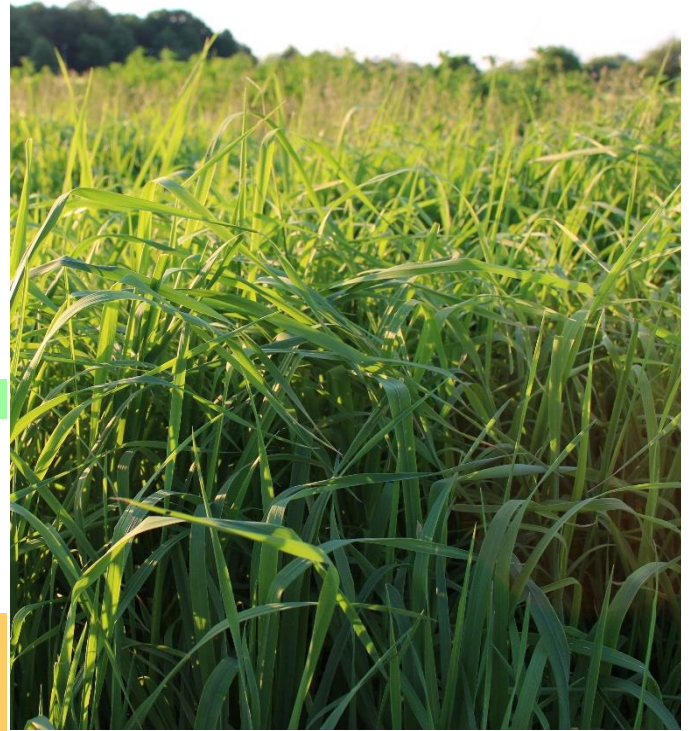
## Variety

## RASANT

<b>Species</b>	Timothy grass
<b>Botanical name</b>	Phleum pratense
<b>Ploidy</b>	2
<b>Seeding rate</b>	15 kg/ha
<b>Distance between rows</b>	as cereals
<b>Sowing period</b>	April to August
<b>Sowing depth</b>	1–2 cm

### Agronomic figures\*:

Heading	2
Development after sowing	6
Tendency to winterkilling	5
Tendency to lodging	4
Susceptibility to rust	5
Persistence	5
Sward density	4
DM-yield total	5
DM-yield first cut	6
DM-yield in aftermath	5



### Clarification of figures\*:

1: very early, very low / 5: medium / 9: very late, very high

\* **Source:** Bundessortenamt [Federal Plant Variety Office] 1990, state variety tests

### Variety description

RASANT is a well-established timothy-grass variety, characterised in particular by its good stand. It is valued for its high mass formation after sowing and high yield in the first cut, which helps to suppress weeds and other unwanted species and achieve a good plant stand. In addition, RASANT is characterised by good yields through the remaining year.

### Most important characteristics

High mass formation after sowing  
Good plant stand  
High yields in the first cut and during the course of the year  
Ideal ingredient in permanent grassland mixtures

### Usage

With a feed value of 8, Timothy grass is suitable for growing on meadows as well as pastures. It tolerates multiple cuts, even if the regrowth is rather weak. Timothy grass is extraordinarily winter-hardy and extremely persistent, which makes it suitable for many grassland mixtures.

